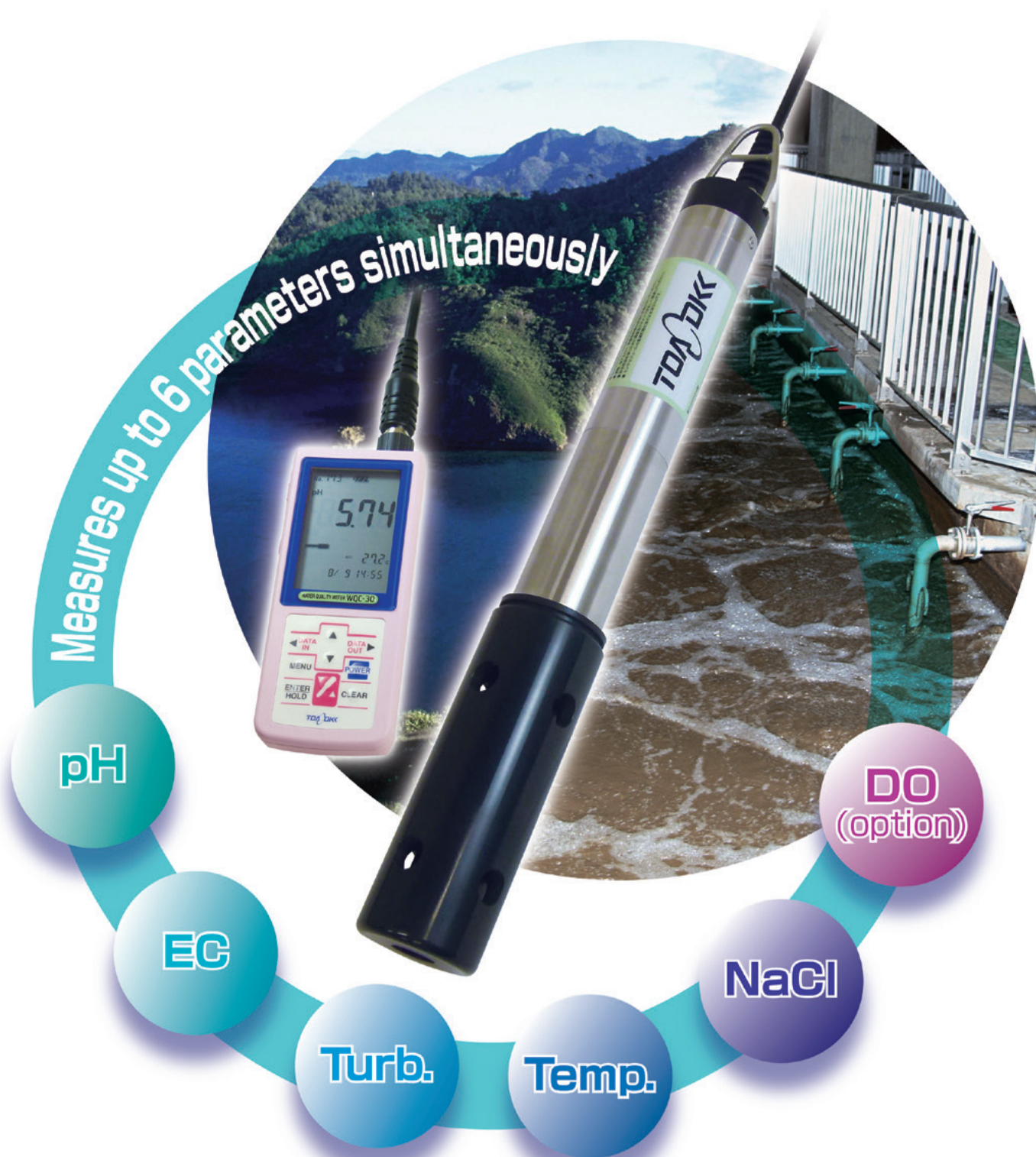


WQC-30

Portable Water Quality Meter



For applications such as River/Lake, and factory effluent water quality measurement



pH

EC

Turb.

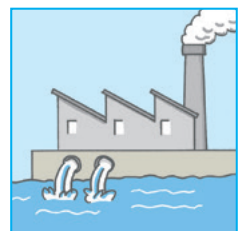
Temp.

NaCl

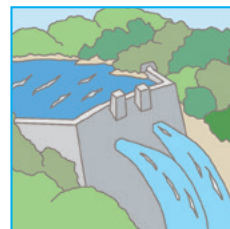
DO
(option)

Measures up to
6 parameters
simultaneously

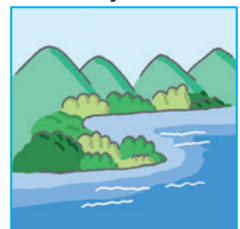
For various
applications



Factory effluent



Dam



Lake



River



Construction effluent

Superior reliability in low range turbidity measurement

Repeatability in low range measurement is $\pm 1\%$.

Saves up to 200 data

Automatic memory at fixed time intervals is also possible and it is effective for simple monitoring etc.

*Short interval memory function: 2 sec.-99 min. 59 sec. or
Long interval memory function: 2 min. 99 min. (After 1min. measurement, it will be in sleep mode.)

*This sensor module does not have cleaning function. In order to maintain measurement accuracy, frequent cleaning of the sensor part is required.

*This sensor module is not for continuous measurement. When performing simple monitoring, please keep continuous use time within 24 hours.

Compact and robust

Small-size and easy to hold the Main unit with one hand. WQC-30 is water-proof, dust-proof, robust, and suitable for field-use. Its lower energy consumption design assure long battery life.

*Dimensions: Main unit Approx. 68(W)×35(H)×173(D) mm

*Weight: Main unit Approx. 290g (including batteries)

*IP67 rated

System extensibility (Connectable to PC, external printer)

Measurement data can be exported to PC in text format with data collection software.

Specification

Parameter	pH, Conductivity, Turbidity, Temperature, Salinity, DO(optional)	
Measurement method	pH	Glass electrode method
	Temp.	Thermistor resistor method
	Turbidity	90°C light scattering method
	Conductivity	AC 4 electrode method
	Salinity	Conversion from Conductivity
	DO(optional)	Membrane type polarographic method
Measurement range	pH	pH0.00 ~ pH14.00
	Temp.	0.0 ~ 50.0°C
	Turbidity *1	0.0 ~ 80.0 NTU (mg/L) 0 ~ 800 NTU (mg/L) Range switch: Automatic/Manual
	Conductivity	0.0 mS/m ~ 10.00 S/m Range switch: Automatic/Manual
	Salinity	0.00~4.00% (NaCl) / 0.00~40.00(PSS)
	DO(optional)	0.00~20.00 mg/L / 0~200 %
Display range	pH	pH-2.00 ~ pH16.00
	Temp.	-5.0 ~ 110.0°C
	Turbidity	0.0 ~ 88.0 NTU (mg/L) 0 ~ 880 NTU (mg/L)
	Conductivity	0.0 ~ 202.0 mS/m 0.000 ~ 2.020 S/m 0.00 ~ 20.20 S/m
	Salinity	0.00~4.04% (NaCl) / 0.00~40.40(PSS)
	DO(optional)	0.00 ~ 22.00 mg/L / 0 ~ 220 %
Repeatability *2	pH	Within ±0.05 pH
	Temp.	Within ±0.5°C
	Turbidity	Within ±1%(FS), Within±0.8NTU (0.0~80.0NTU), Within8NTU (0~800NTU)
	Conductivity	Within ± 1% (FS) each range
	Salinity	Within ± 0.04% (NaCl) / Within ± 0.42 (PSS)
DO(optional)	Within ±0.1 mg/L / ±2 %	
Sensor depth	Within 30m (0.3MPa equivalent)	
External output	RS-232C(Non-insulated):PC or external printer EPS-P30(optional)	
Water proof(Main unit)	IP67 (Effective when connected to sensor and when output/input part is masked) * 1m, 30min immersion possible	
Guaranteed temperature	0~45°C(0~40°C when using optional AC adapter or external printer)	
Power source	AA battery/Nickel hydrogen battery (2) or AC adapter (7VA optional)	
Dimensions	Main unit:Approx.68 (W)×35 (H)×173 (D)mm Sensor module;Approx.φ55×476mm	
Weight	Main unit:Aprox.290g (Including batteries) Sensor module(Cable length 2m):Approx.1400g	



* 1 Turbidity when calibrating with formazine standard solution is shown as NTU and turbidity when calibrated with kaolin standard solution is shown as mg / L. (SS concentration cannot be measured.)

* 2 Under certain condition.

Standard Accessories

pH6.86 Standard solution 500mL	143F192
pH4.01 Standard solution 500mL	143F191
Reference electrode internal solution 50mL	143F235
Reference electrode replacement liquid junction	6784580K
Dummy cap (Placed in the electrode installation point as a default)	7313440K
Spanner	67628000
Calibration beaker(2)	7340450K
Silicon grease	141D002
AA battery (2)	
User manual	

Options

Sensor module

Model/Product name	Cable length
Sensor module WMS-30	2m (Standard)
	11m
	30m

pH

Product name	Code No.
pH4.01 Standard Solution 500mL	143F191
pH8.68 Standard Solution 500mL	143F192
pH9.18 Standard Solution 500mL	143F193
Reference electrode internal solution 50mL	143F235
Glass electrode tip	ELP-023
Reference electrode	ELR-001
Liquid junction	6784580K

Conductivity

Product name	Code No.
Conductivity Cell Check C Solution 100mL(4 bottles) 140.9mS/m at 25°C	OBIO0001

DO

Product name	Code No.
Dissolved oxygen electrode unit	ELD-045
Membrane set (2 sets)	7471600K
Electrolyte for Polarographic Dissolved Oxygen Electrode(50mL)	143D169
Electrolyte for Polarographic Dissolved Oxygen Electrode(50mL, with nozzle)	143D167
Sodium Sulfite 50g	143A030
Stirrer	7358340K

Other options

Product name	Code No.
Dummy cap	7313440K
Protection cover (With shoulder belt)	7258070K
External printer (With connection cable)	EPS-P30
External printer paper (20 rolls)	P000119
External printer ink ribbon	ORD00001
Connection cable for external printer	118N061
Data collectin software	GP-LOG
RS-232C Connection cble (2m)	118N062
AC Adapter	7472990K
Silicon grease	141D002



HACH MALAYSIA SDN BHD
 10, Persiaran Industri,
 Taman Perindustrian Sri Damansara,
 Bandar Sri Damansara,
 52200 Kuala Lumpur.
 Tel: 603-6276 8229
 Email: marketing.hm@hach.com
 Website: www.my.hach.com



CAUTION

Please read the operation manual carefully before using products

Specifications and prices are subject to change without notice.